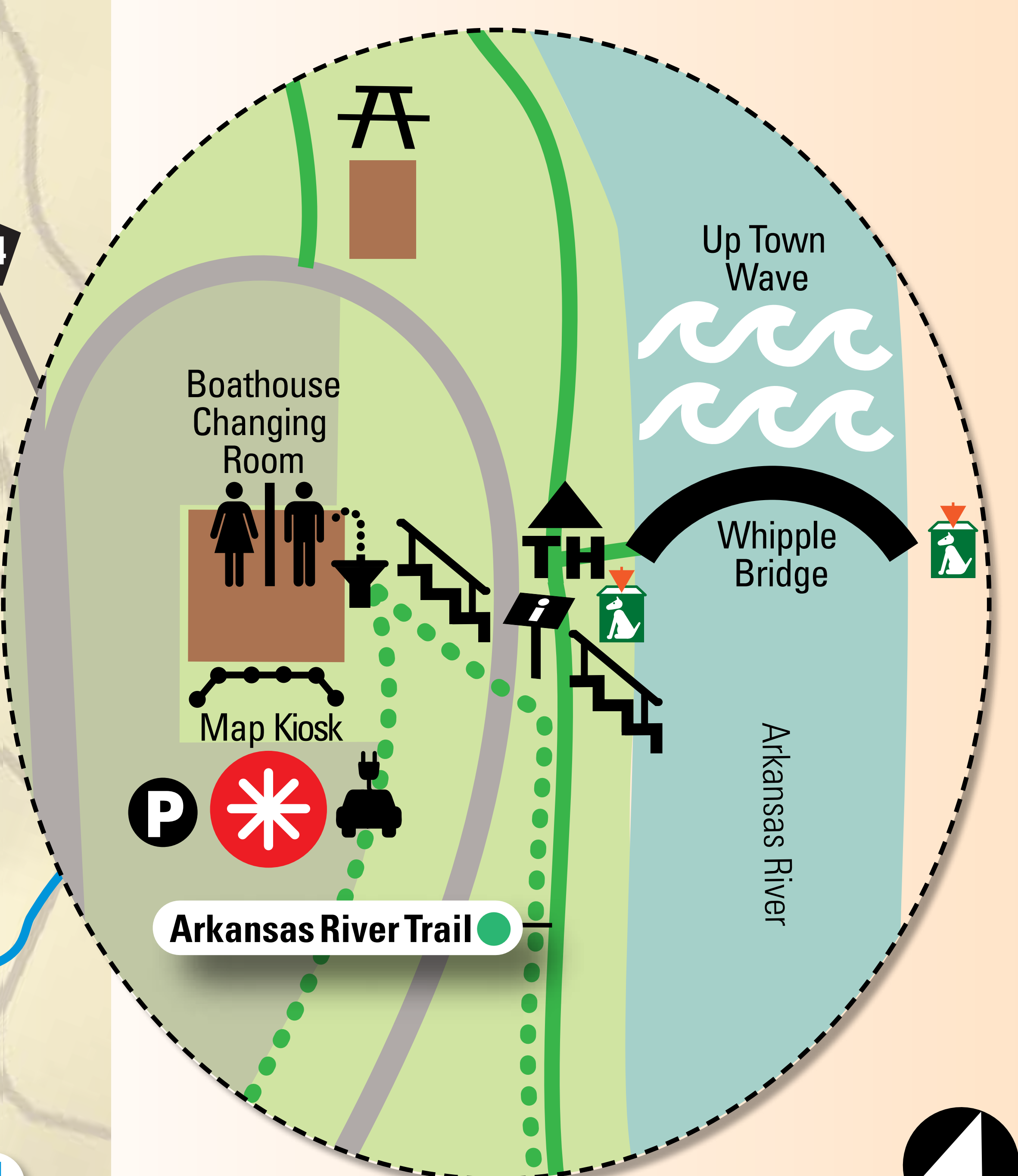
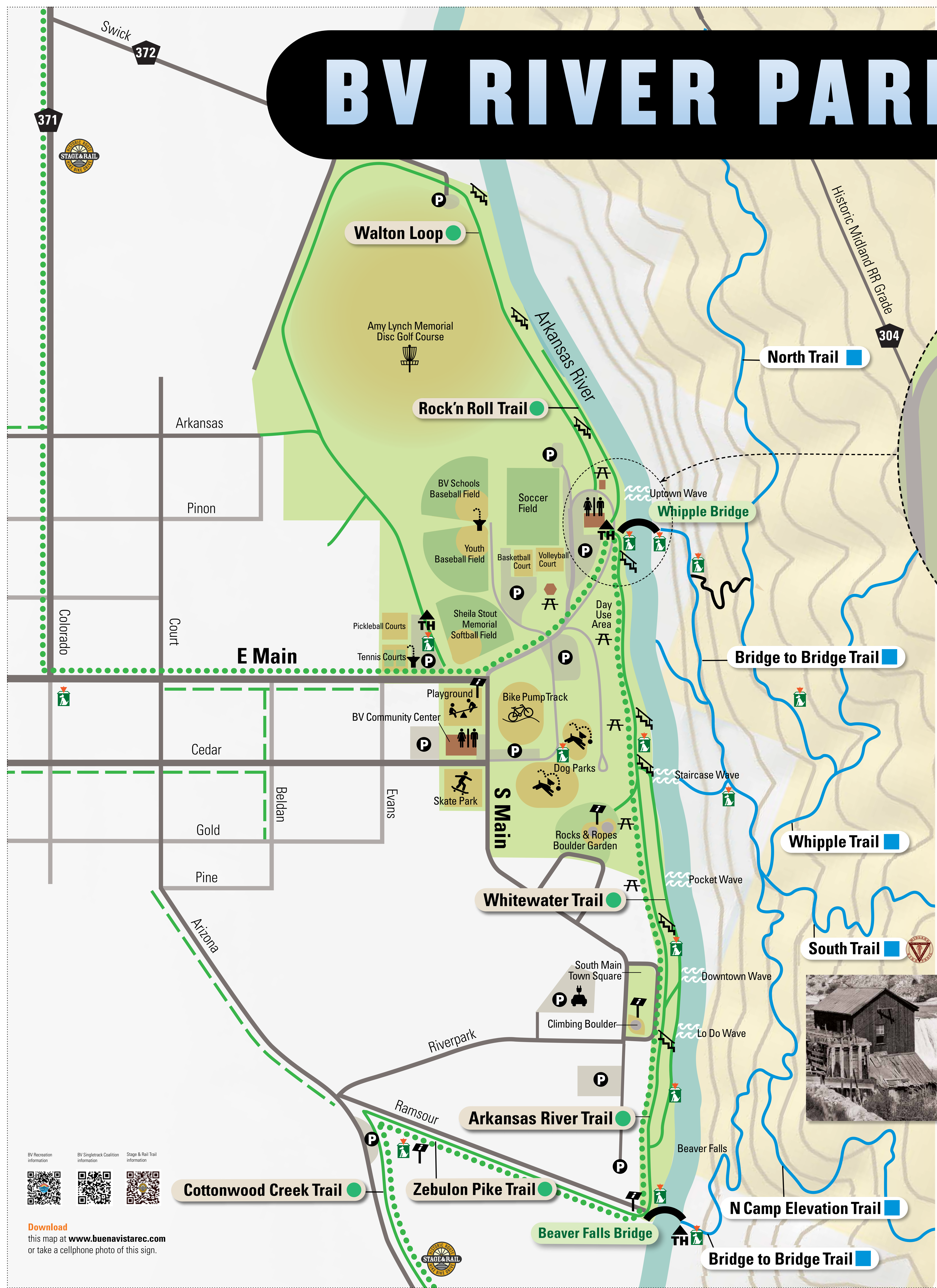
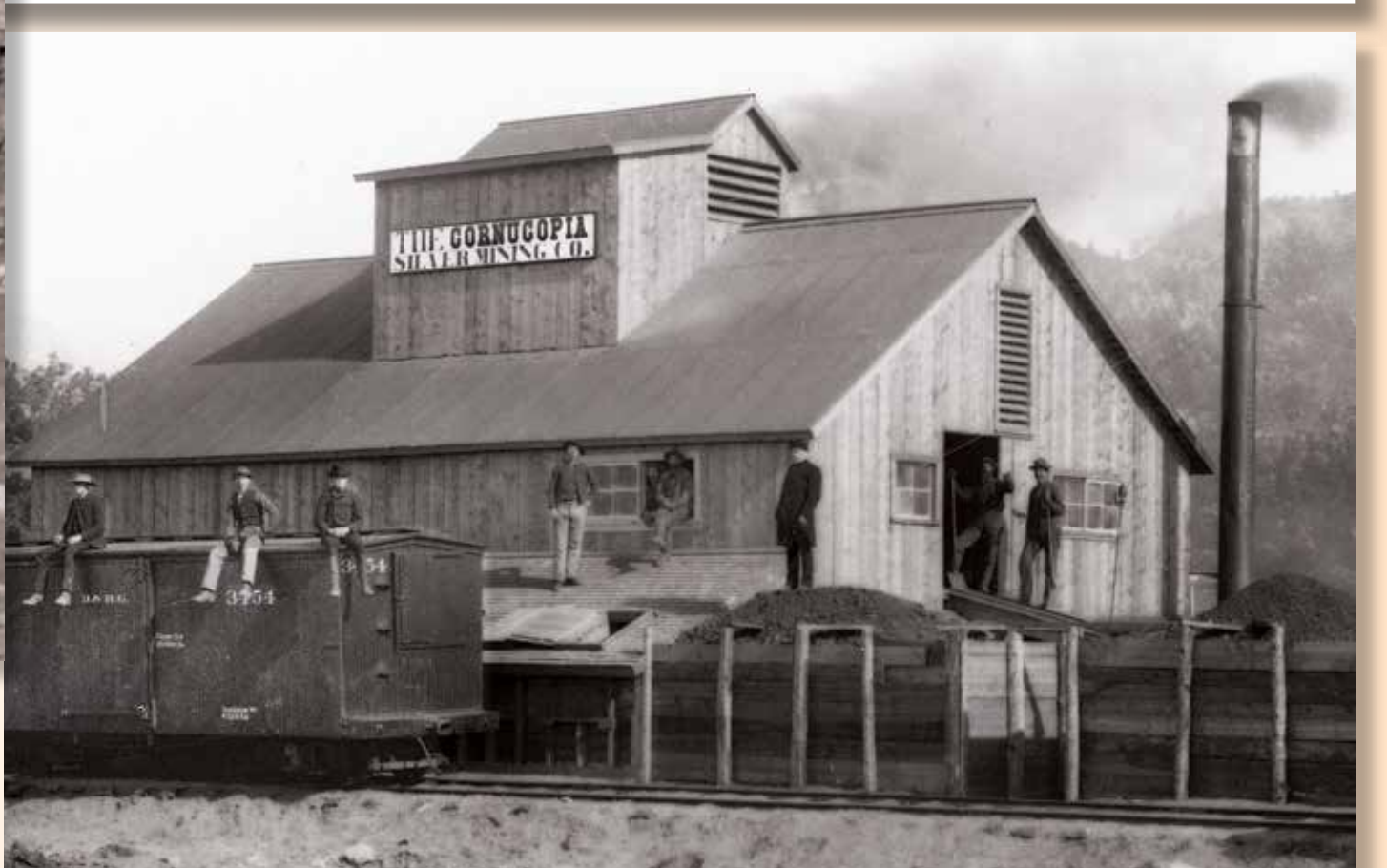
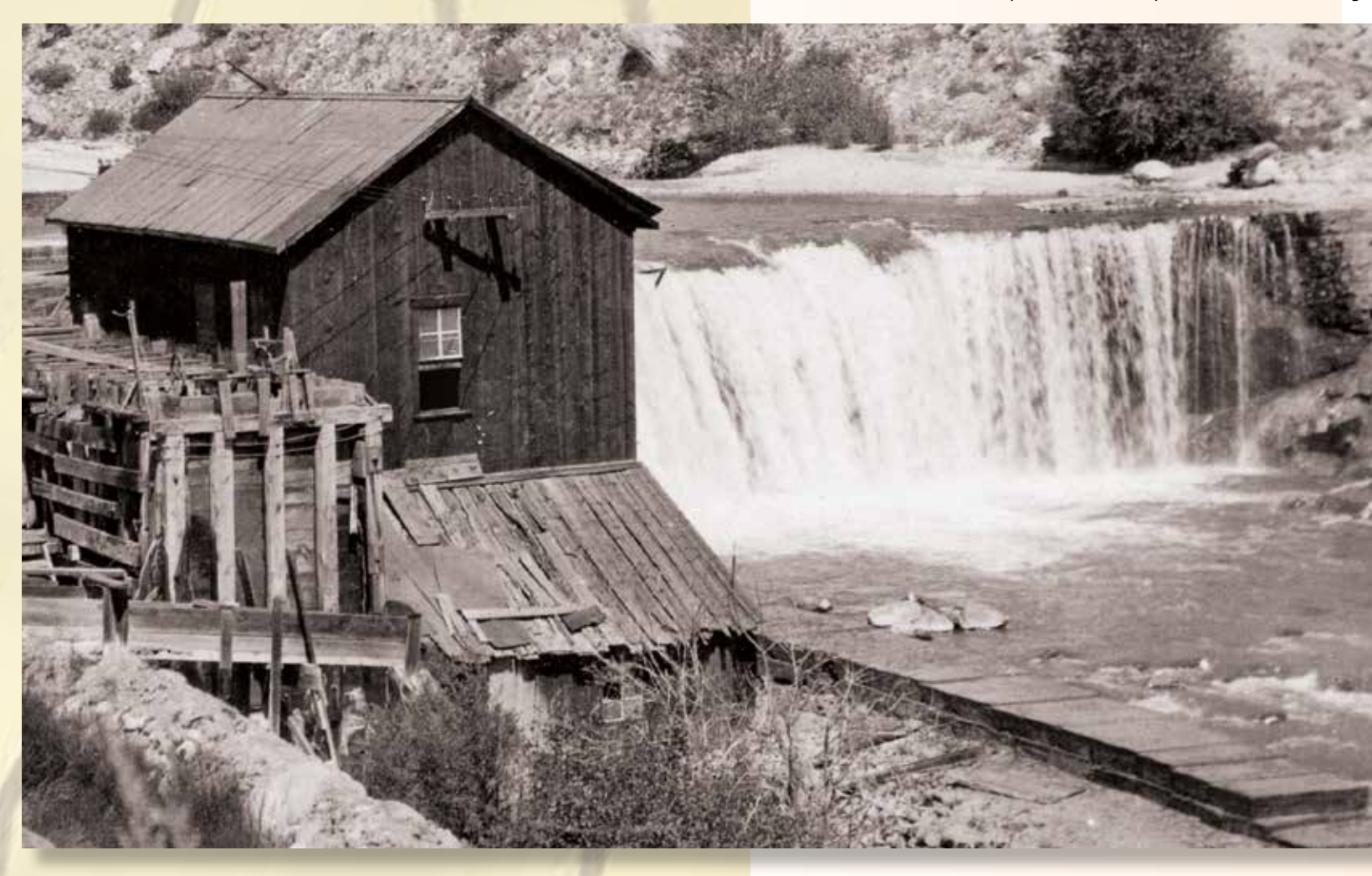


BV RIVER PARK

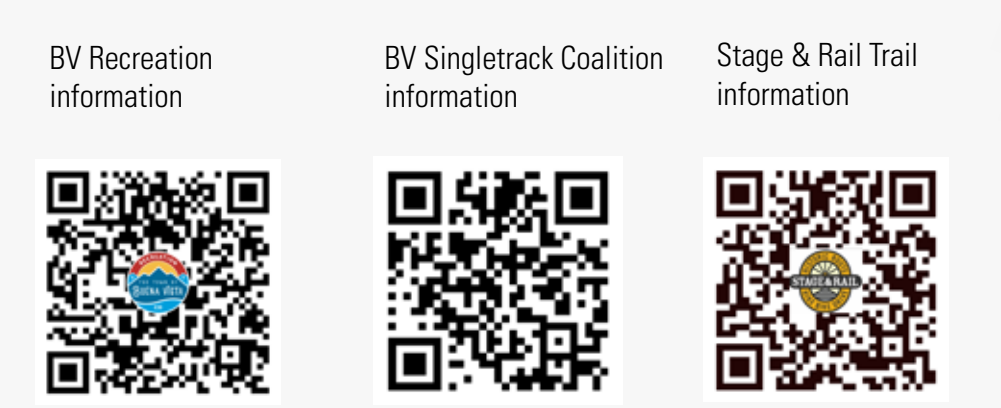


Legend

- bike/ped lane
- easiest bike/ped trail
- moderate bike/ped trail
- difficult bike/ped trail
- Stage & Rail Historic Route
- dog waste station
- parking, trailhead
- bike/ped bridge, play wave
- stairway to river, picnic area
- water fountain, restrooms
- charging station, info kiosk
- You are here!



In past years,
 Buena Vista's beautiful riverfront served a different purpose than recreation and solace. Like many towns across the country, our riverfront was an industrial zone. The power plant and its river dam provided the town with electricity from 1888 to 1948. The Cornucopia Smelter processed 150 tons of ore every 24 hours from Chalk Creek's Mary Murphy Mine, and mines in Leadville and Alma. The smelter was near today's tennis court. Its slag is still visible near the softball field bleachers.



Download this map at www.buenavistarec.com or take a cellphone photo of this sign.

